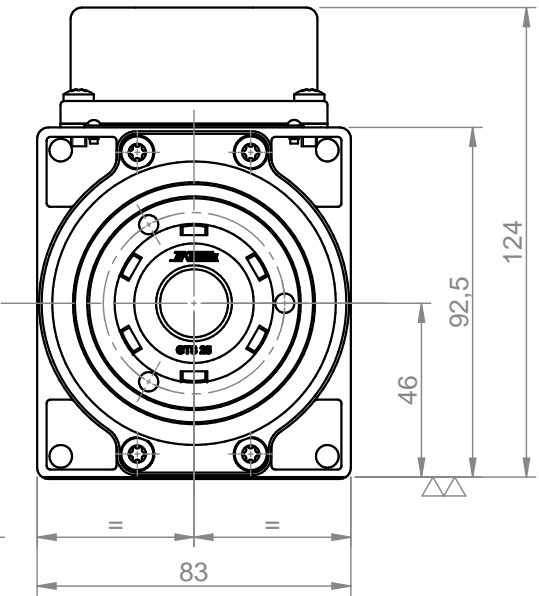
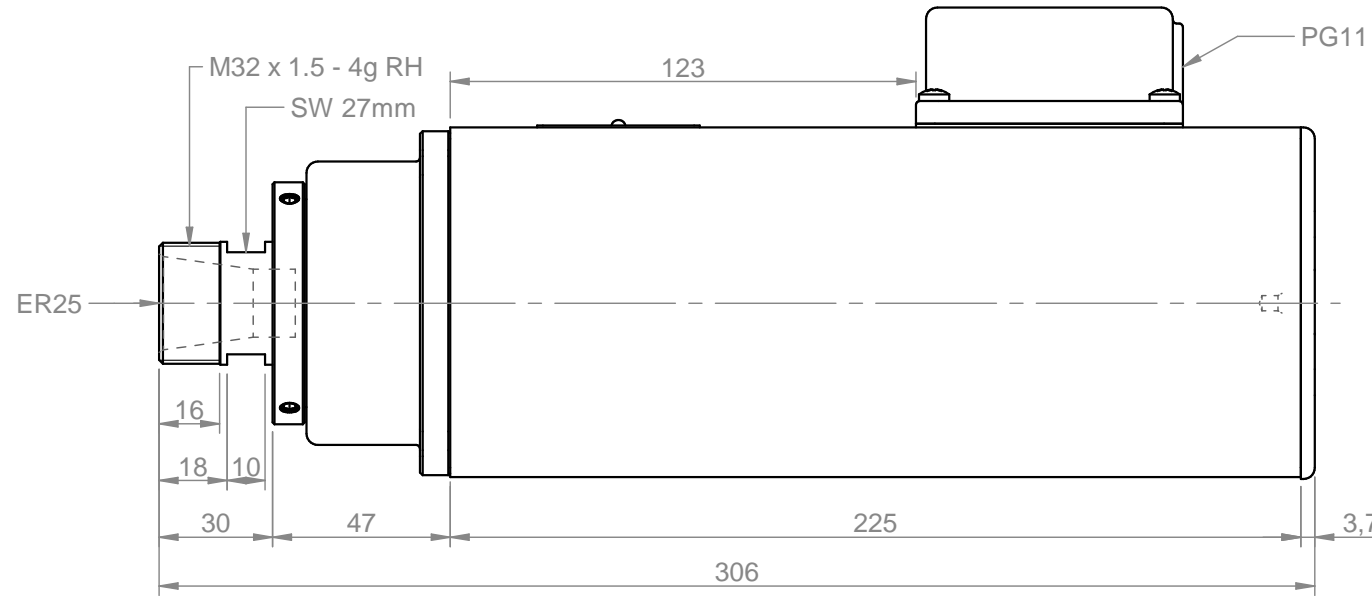
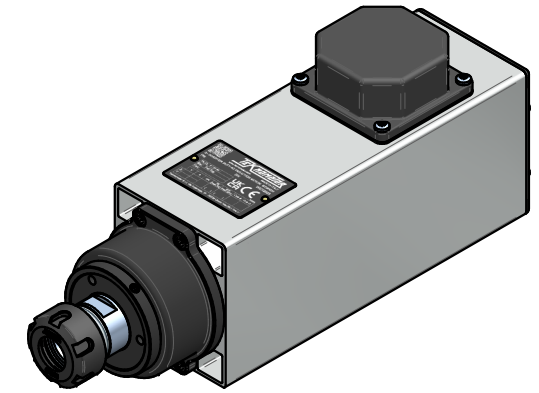
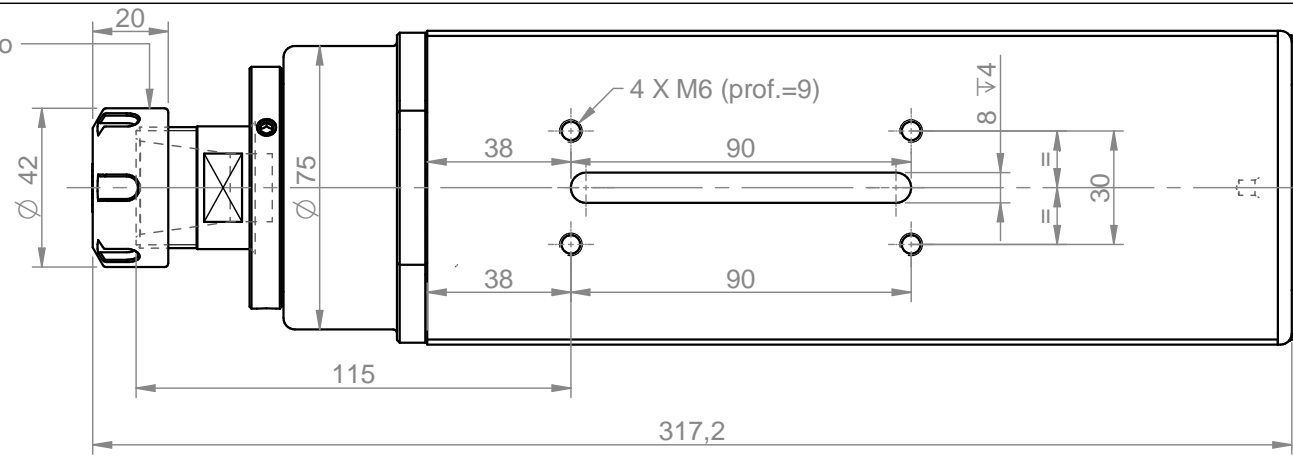


Ghiera serraggio
GTS25 RH
standard
equilibrata



Power [kW]	Duty Cycle	Base speed [rpm]	Base freq. [Hz]	Base voltage Δ [V]	Absorb. Δ [A]	Base voltage Y [V]	Absorb. Y [A]
3.0	S6 60%	18000	300	220	12.1	380	7.0
Power [kW]	Duty Cycle	Base speed [rpm]	Base freq. [Hz]	Base voltage Δ [V]	Absorb. Δ [A]	Base voltage Y [V]	Absorb. Y [A]
Min speed [rpm]		Max speed [rpm]	Max freq. [Hz]	Protection	Ins. Cl.	Part number on nameplate	
6000		24000	400	IP54	F	COM41470676	
Balancing according to ISO 1940 - G2.5 @ 24000 rpm			Balancing type		tool type	full key	tool type
					half key	Peso / weight	
					7.73 kg		Title
							4147-C-DBS-P-ER25-HY-RH

TEKNOMOTOR

Teknomotor S.r.l.
Via Argenega 31, I-32038 Quero Vas (BL)
www.teknomotor.com

rev. n°	description		date	signature	Customer	Drawing code
00	Emissione		01/06/2023	D. Bottarel	CNC Line	COM41470676
Tolleranze non quotate: UNI EN 22768 fH Smussi non quotati: 0.5 mm Rugosità secondo UNI ISO 1302						

drawn - date	approved - date	checked - date	sostituisce il	dis. n°1340 cod. 5Com41470244.dwg	foglio / sheet	scala
M. Giacometti - 01/06/2023	S. Perli - 01/06/2023	S. Perli - 01/06/2023	sostituito dal		1 / 1	1:2

