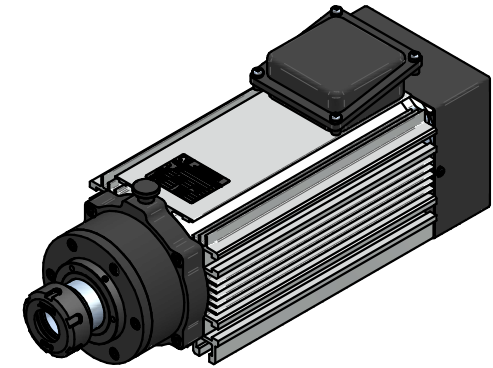
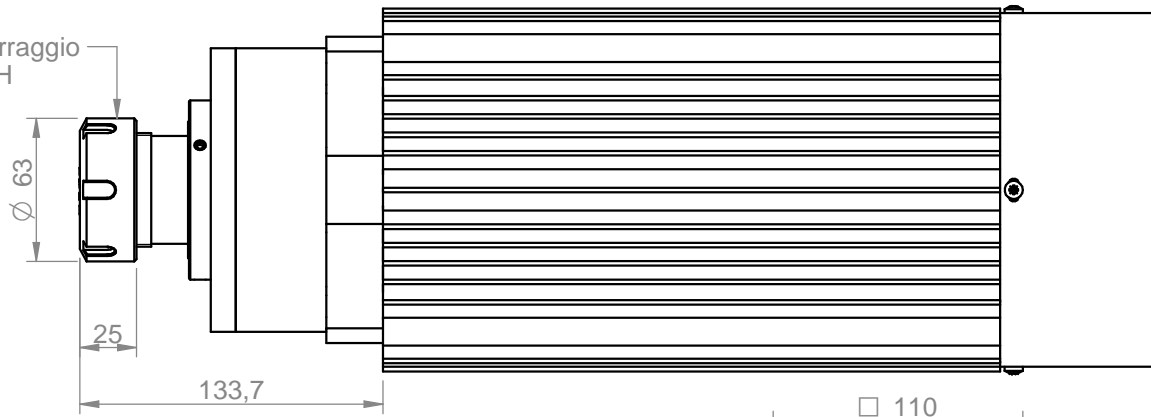
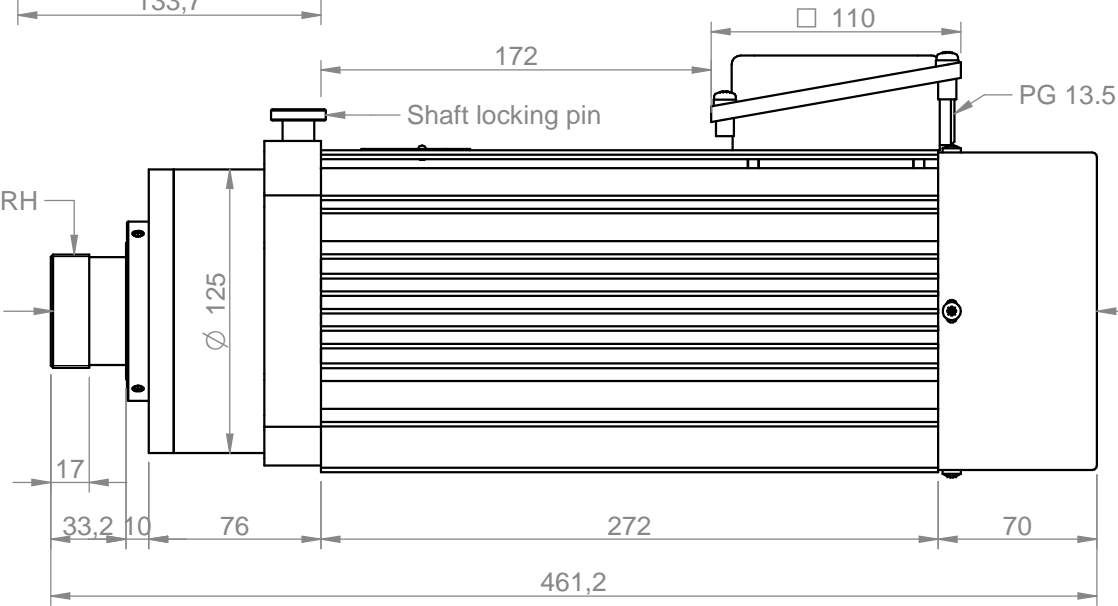


Ghiera serraggio
GTS40 RH

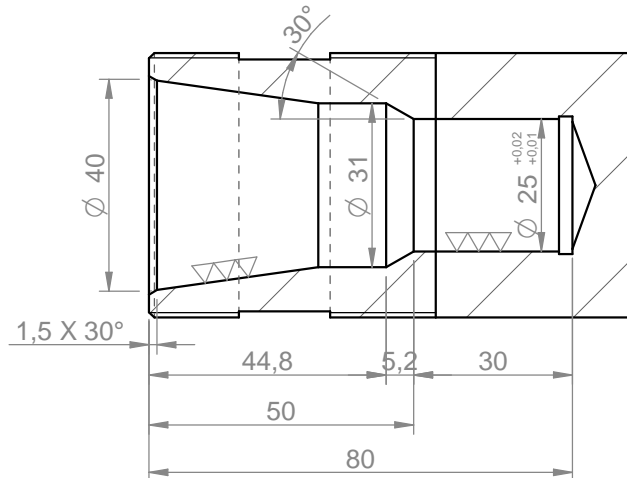
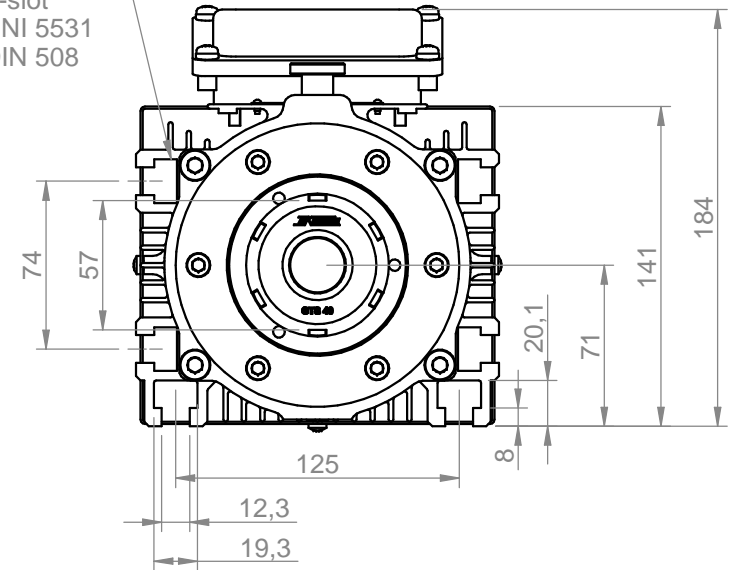


M50 x 1.5 4h RH

ER40
speciale



T-slot
UNI 5531
DIN 508



Power [kW] 4.0	Duty Cycle S1	Base speed [rpm] 3000	Base freq. [Hz] 50	Base voltage Δ [V] 220	Base voltage Y [V] 380	Protection IP54	Ins. Cl. F
Min speed [rpm] 3000		Max speed [rpm] 6000	Max freq. [Hz] 100	Absorb. Δ [A] 15.2	Absorb. Y [A] 8.8	Part number on nameplate COM71800355	
Balancing: G2.5 - ISO 1940 @ maximum motor speed		Balancing type Full Key		tool type full key	tool type half key	Peso / weight 31.59 kg	
Tolleranze non quotate / unlisted tollerances: ±0.5mm Smussi non quotati / unlisted chamfers: ±0.5mm				$\nabla = 0.8 \nabla$	$\nabla = 3.2 \nabla$	$\nabla = 12.5 \nabla$	$\sim = \nabla$

TEKNOMOTOR

Teknomotor S.r.l.
Via Argenege 31, I-32038 Quero Vas (BL)
www.teknomotor.com

Title
7180-C-2DB-P-ER40-RH

rev. n° 00	description Emissione	date 20/01/2017	signature D. Bottarel
drawing code COM71800355		Drawing n° 5052	

drawn - date E. Gaspari - 20/01/2017	approved - date S. Perli - 20/01/2017	checked - date S. Perli - 20/01/2017	sostituisce il sostituito dal
---	--	---	----------------------------------

foglio / sheet
1 / 1

scala
n.d.



A4